

Editors of the Bulletin

B. MAZAR

A. MALAMAT

Secretary

J. AVIRAM

Editorial Advisory Board

D. H. K. AMIRAN, M. AVI-YONAH

This issue is published in cooperation with the Department of Geography, Hebrew University, Jerusalem and devoted to Studies in the Geography of Israel. Edited by Prof. D. H. K. Amiran, Head of the Department.

Maps and drawings by M. Karmon and N. Baer.

BULLETIN

OF THE

ISRAEL EXPLORATION SOCIETY

Vol. XXIII

Nos. 3-4

1959

CONTENTS

Y. Karmon	: Geographical Conditions in the Sharon Plain and their Impact on its Settlement	111
D. H. K. Amiran and A. Shahar	: The Large Cities of Israel— A Geographic Comparison	134
I. Schattner	: The Load of the Lower Jordan	157
Y. Ben-Arieh	: The Caves in the Beth-Guvrin Region	176
D. Sharon	: Geographical Aspects of the Tuleilat el-‘Enab	194
Y. Kedar	: The Ancient Agriculture in the ‘Avdat Area	203
Miscellanea		
	Preliminary Report on the Results of an Agricultural Experi- ment in the Negev Mountains (Y. Kedar)	230
	Ancient Agricultural Installations in the Negev Mountains (Y. Kedar)	232
	Field Survey of the Department of Geography in the Safed Area (A. Shahar).	234
Plates	77-8
English Summary	I-VI

ISRAEL EXPLORATION SOCIETY

Under the Distinguished Patronage of

H. E. PRESIDENT I. BEN-ZVI

PUBLICATIONS OF THE ISRAEL EXPLORATION SOCIETY

IN ENGLISH

1. ISRAEL EXPLORATION JOURNAL, Quarterly, Volume 9, No. 1, has just appeared.
Annual subscription rate — IL 7, \$ 6, 50
2. THE MADABA MOSAIC MAP, with introduction and comment by M. Avi-Yonah. 80 pp. of text and indices, 14 figs., the Map and 10 colour plates with facsimile and translation facing each. Linen bound. IL 10, \$ 6, 50
The Map, linen mounted as a wall map IL 3, \$ 2. 15
3. MASADA. Report on the Archaeological Survey 1955-56. 16 plates and 22 maps and diagrams, 65 pp. IL 5.500, \$ 3. 50

The address of the Society is P.O.B. 7041, Jerusalem

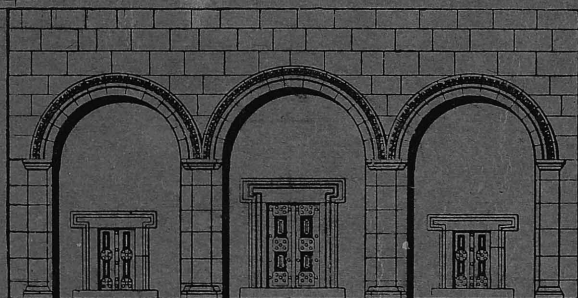
Published by
The Israel Exploration Society
with the assistance of
The Ministry of Education and Culture
and the Jewish Agency

Central Press, Jerusalem

BULLETIN

of the

ISRAEL EXPLORATION SOCIETY



VOLUME XXIII • 3-4 • 1959

JERUSALEM