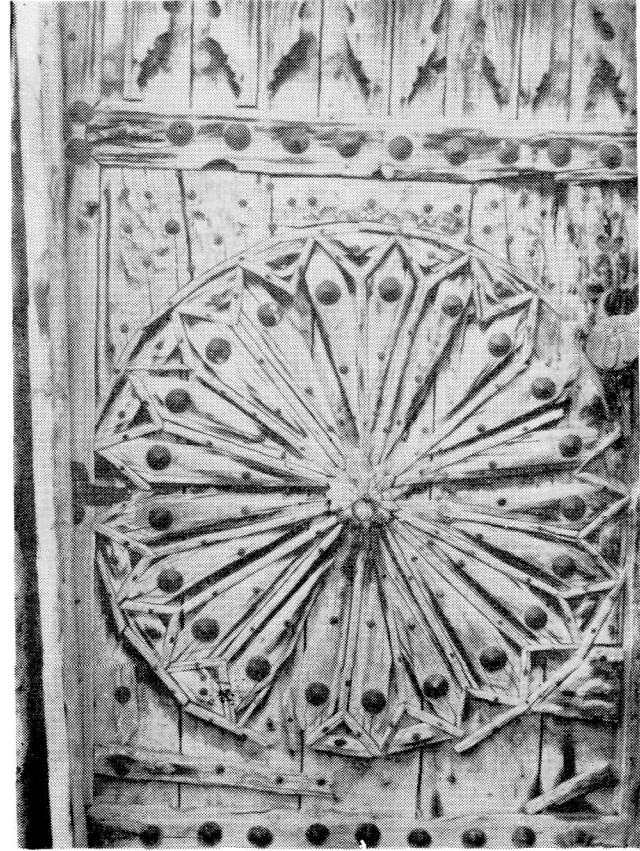
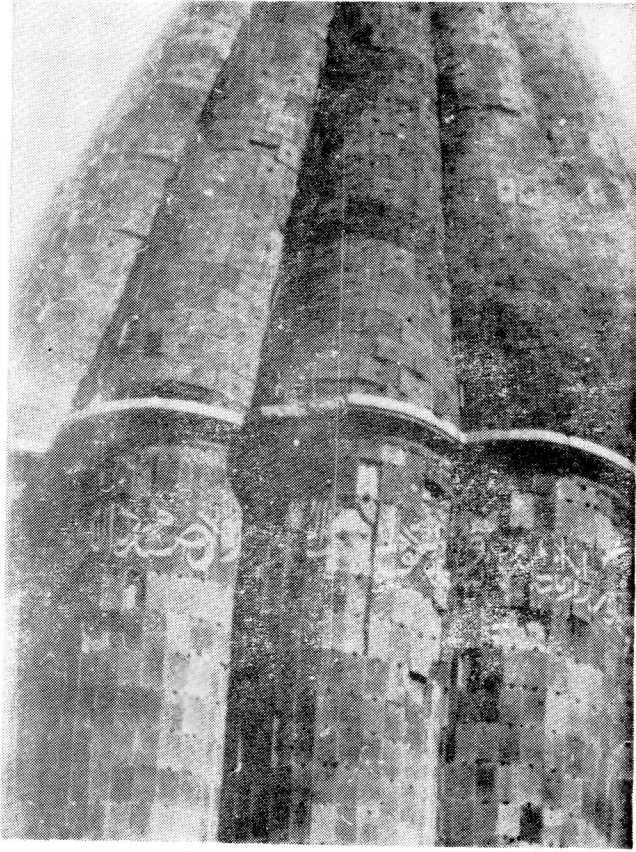


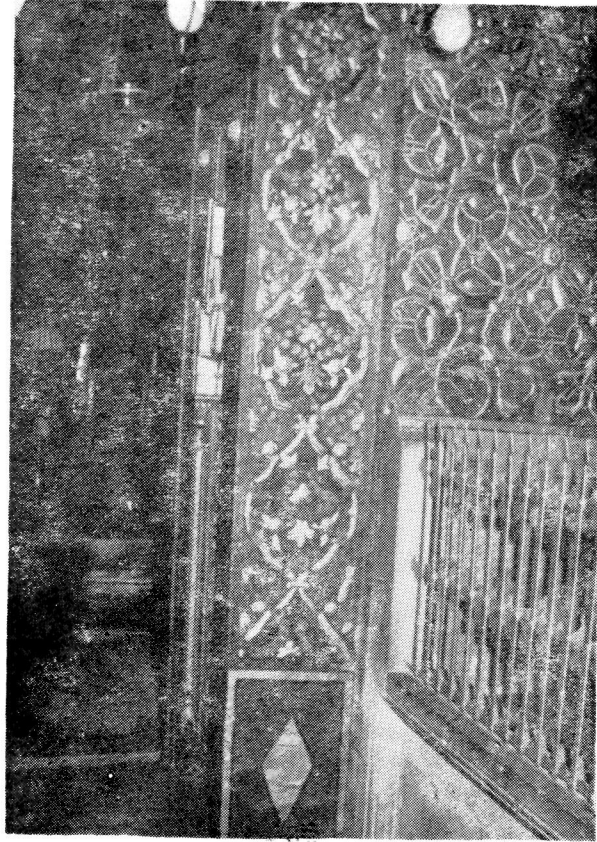
Res. 7— Keban, Yusuf Ziya Paşa Camii, ahşap kapı kanadı.



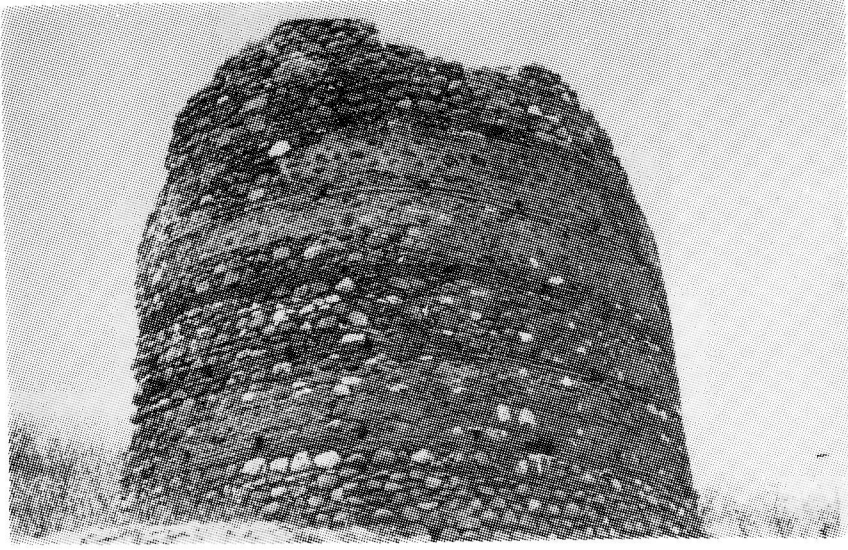
Res. 8— Konya evi, ahşap kapı kanadı süslemesi.



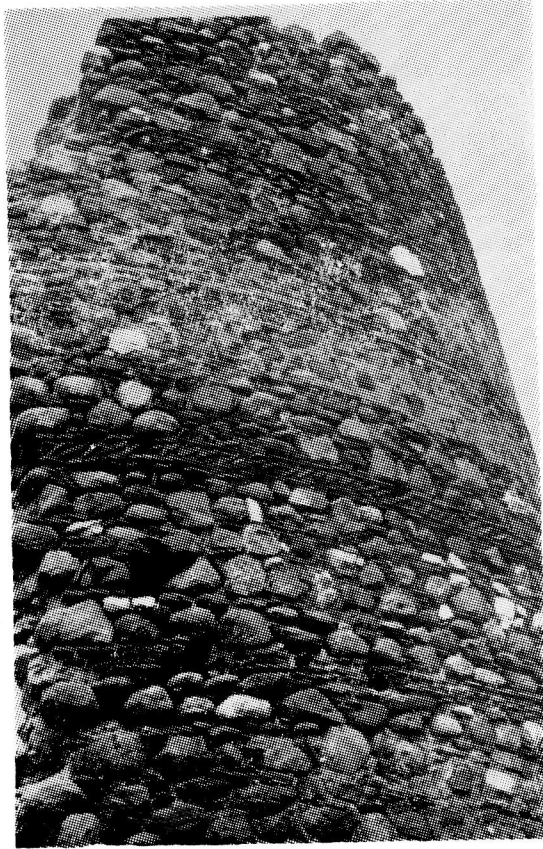
Res. 9— Konya, Mevlâna Türbesi külâhından detay.



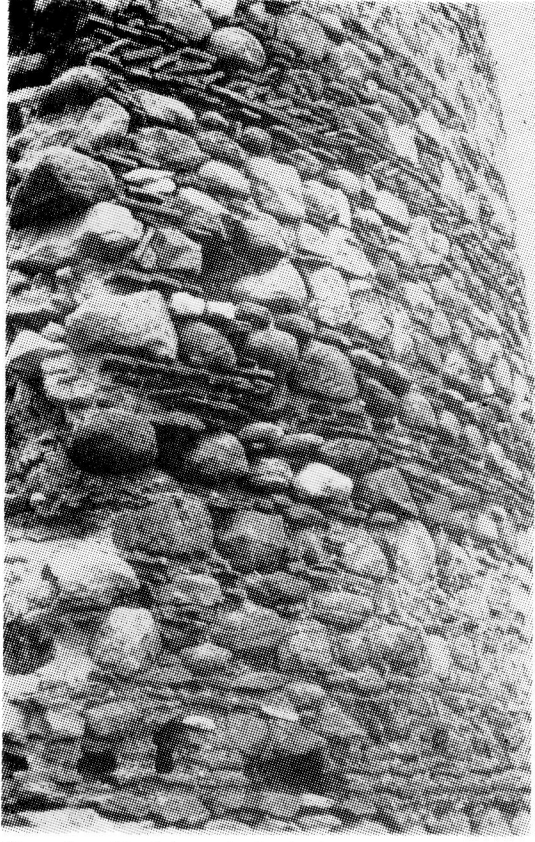
Res. 10— Konya, Mevlâna Türbesi'nde malakâri süsleme



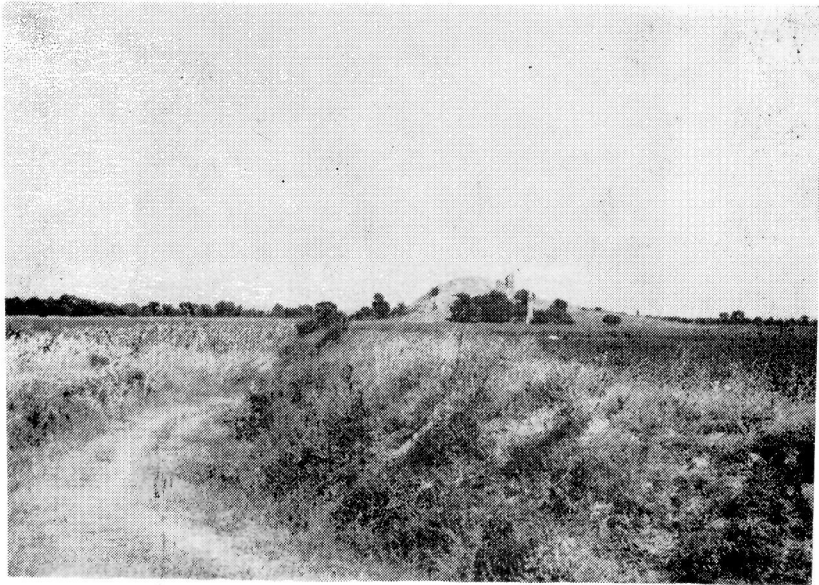
Res. 1— Tophisar kalesinden bir kule



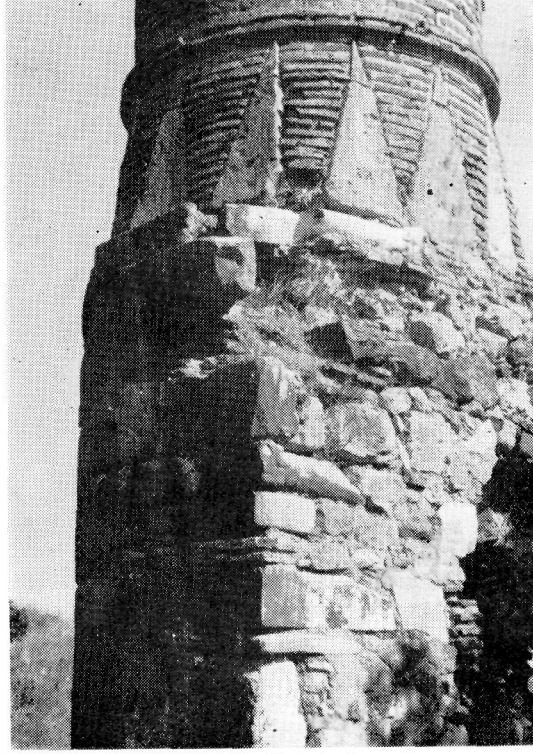
Res. 2— Tophisar kalesindeki kuleden,
süsleme şeritleri.



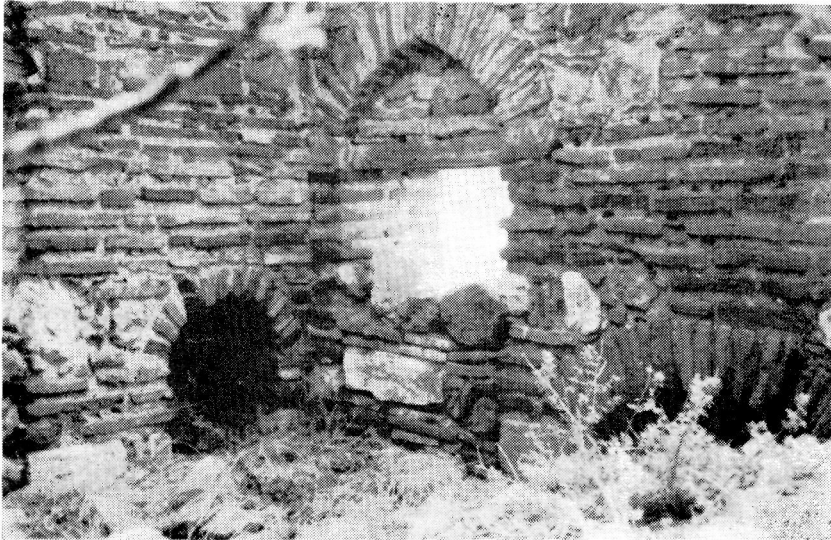
Res. 3— Tophisar kalesindeki kuleden,
alttaki süsleme şeridi.



Res. 4— Tophisar'ın genel görünümü (Prof. W. Müller-Wiener Arşivi)



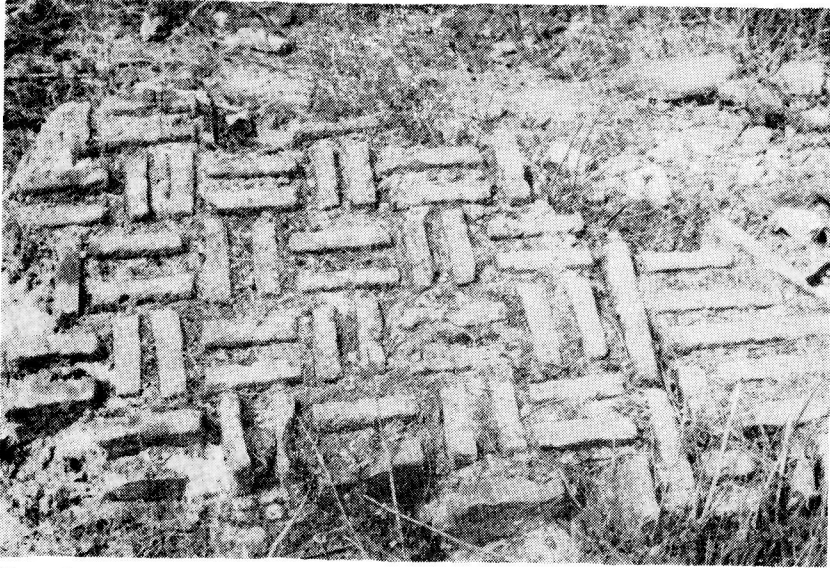
Res. 5— Tophisar külliyesinde mînare
(Prof. W. Müller-Wiener arşivi).



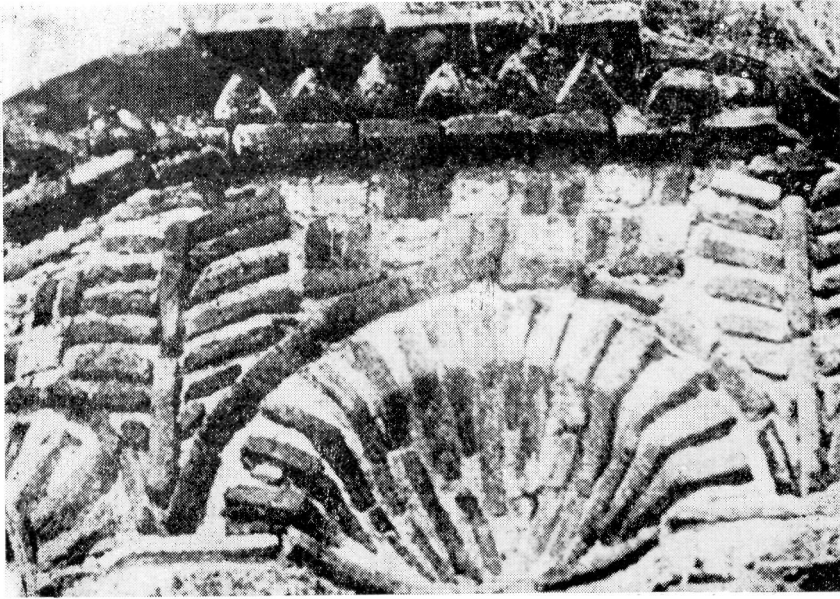
Res. 6— Tophisar külliyesindeki 1 numaralı yapı



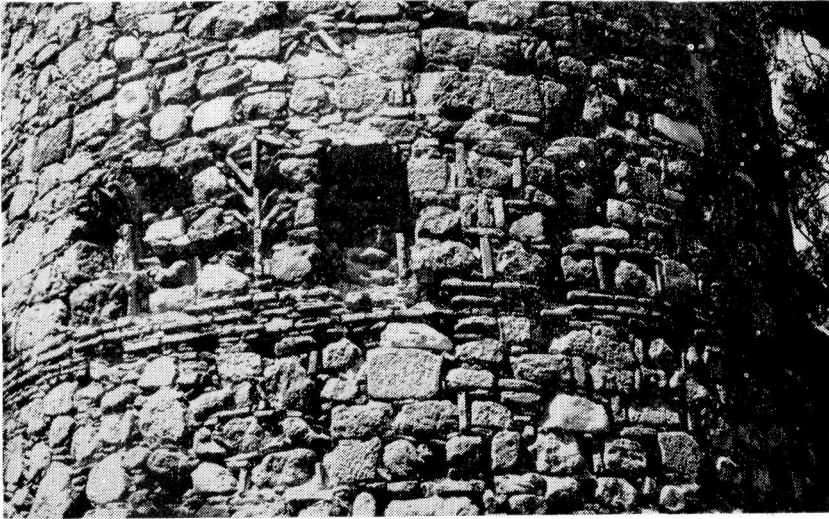
Res. 7— Tophisar külliyesindeki 2 numaralı yapı kalıntısı



Res. 8— Tophisar külliyesindeki 2 numaralı yapının süslemeleri



Res. 9— Tirilye'deki Panagia Pantobasilissa kilisesi apsisindeki süslemeler.



Res. 10— İzmir-Pagüs iç kale, kuzeybatı kule