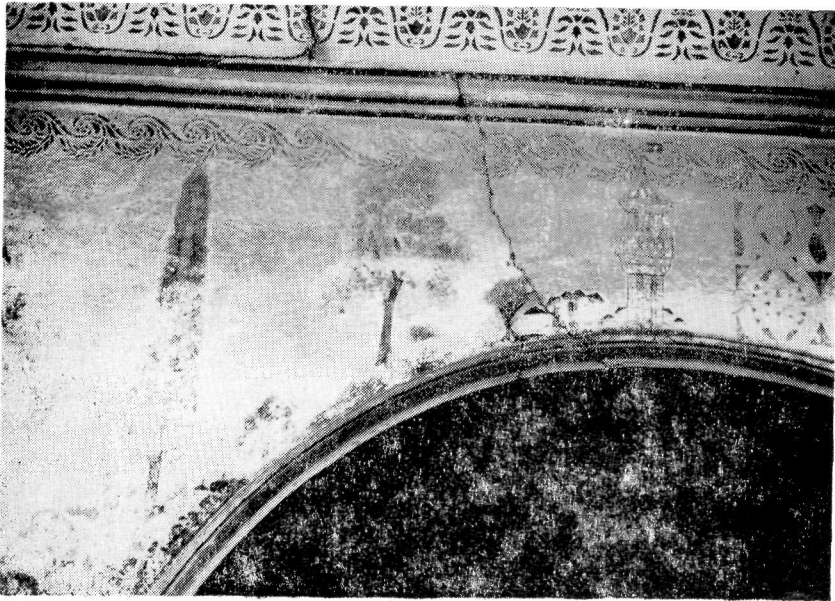
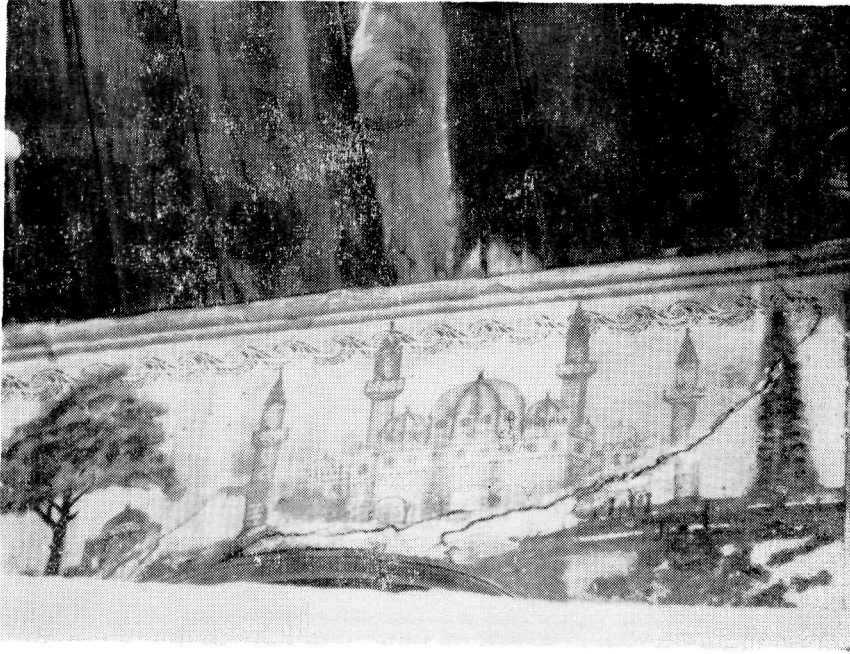




Res. 7— Son cemaat yeri revak kemerlerindeki resimlerden ayrıntı.



Res. 8— Son cemaat yeri revak kemerlerindeki resimlerden ayrıntı.



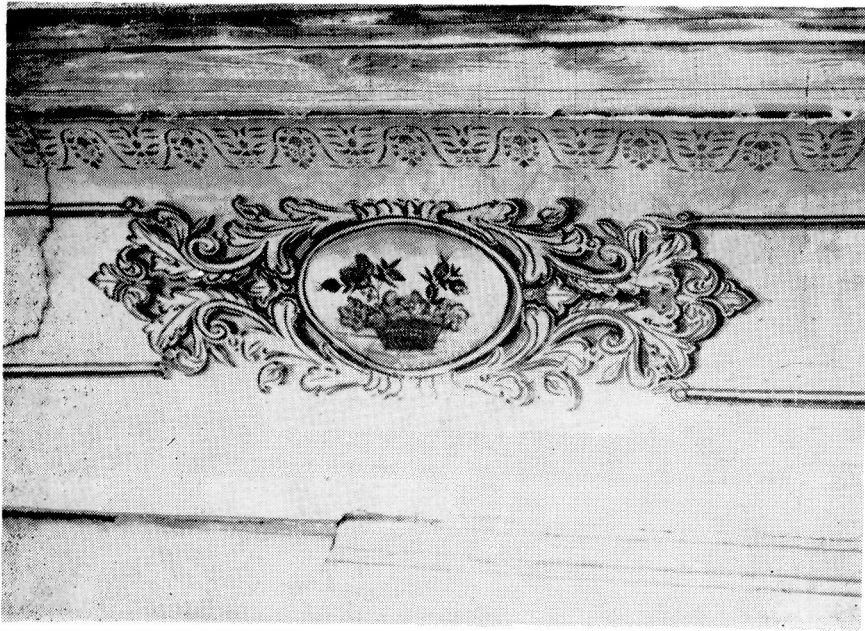
Res. 9— Son cemaat yeri revak kemerlerindeki resimlerden ayrıntı.



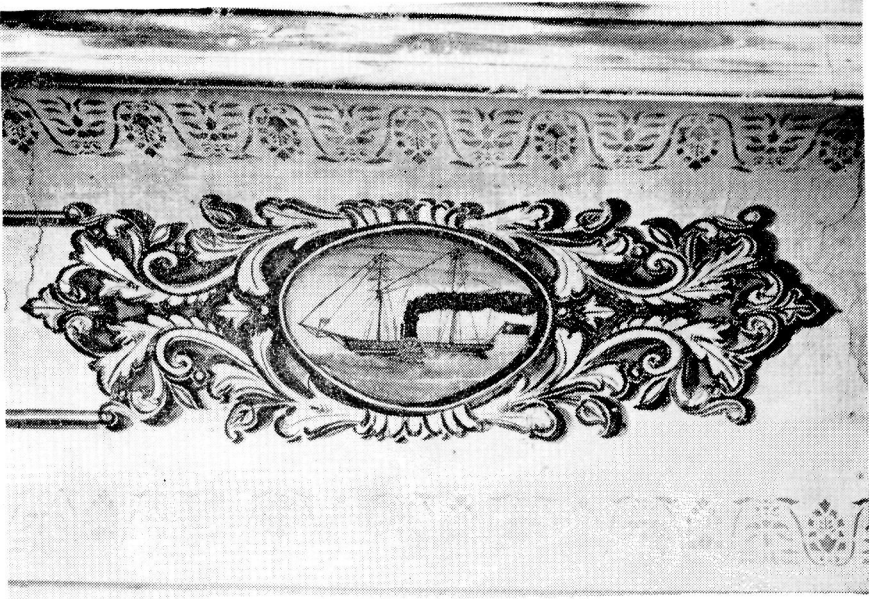
Res. 10— Saçak altı frizi resimlerinden natürmort tasviri.



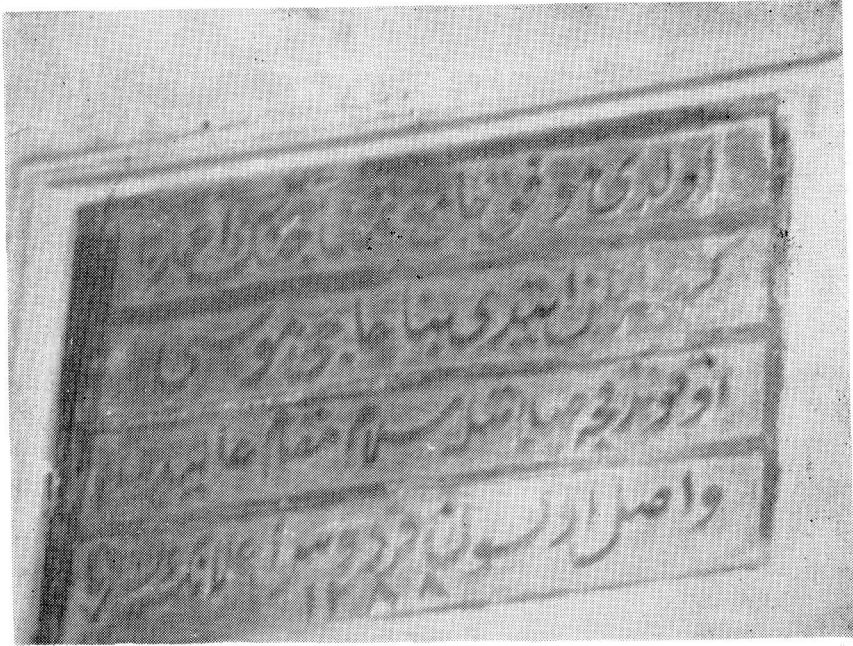
Res. 11— Saçak altı frizi resimlerinden natüremort tasviri.



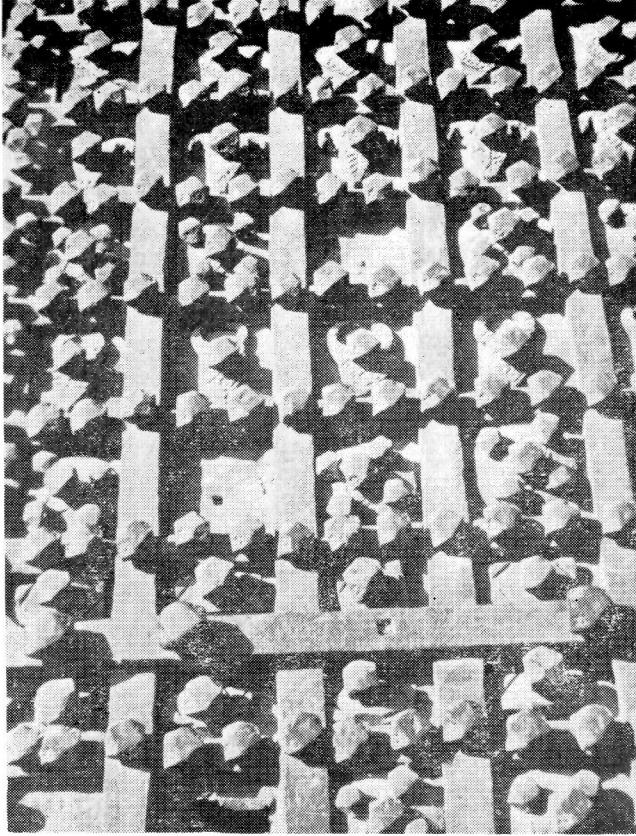
Res. 12— Saçak altı frizi resimlerinden natüremort tasviri.



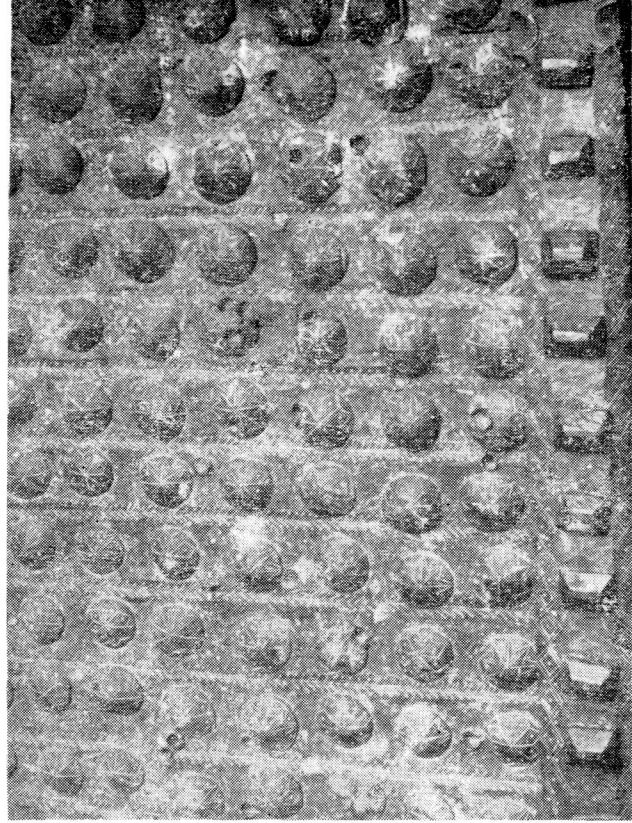
Res. 13— Saçak altı frizi resimlerinden yandan çarklı buharlı gemi tasviri.



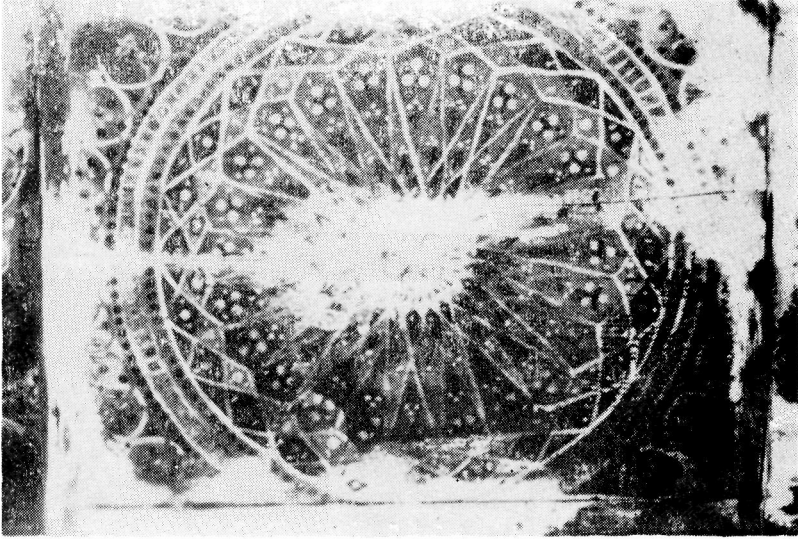
Res.14— Kuzey cephedeki onarım kitabesi.



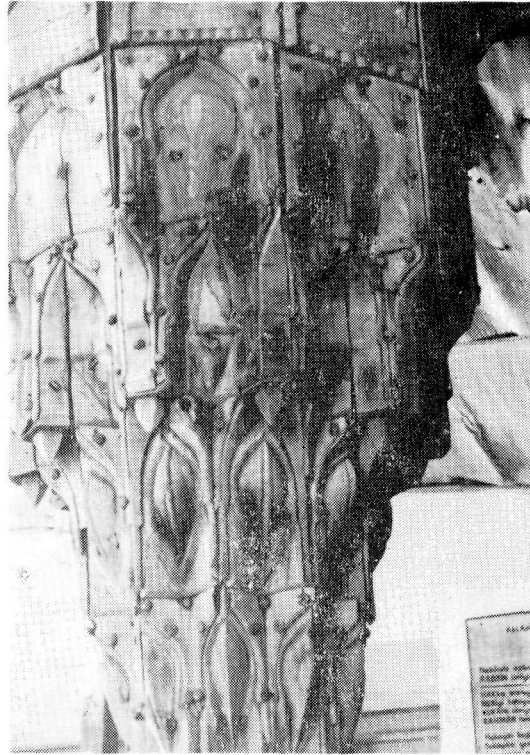
Res. 1— Diyarbakır, dış surlarda bulunan Urfa kapısı madeni kanatlarından detay.



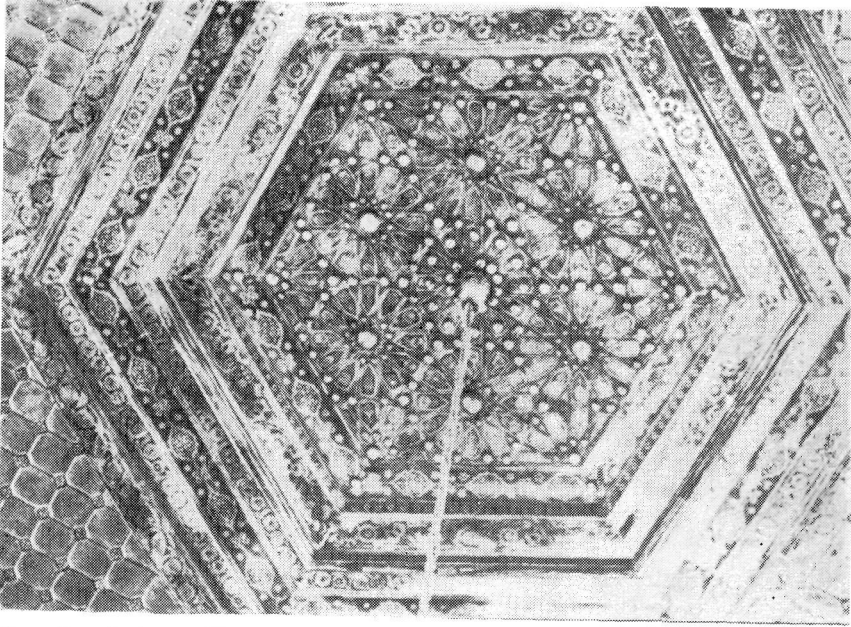
Res. 2— Hoşab kalesi madeni kapı kanatlarından detay.



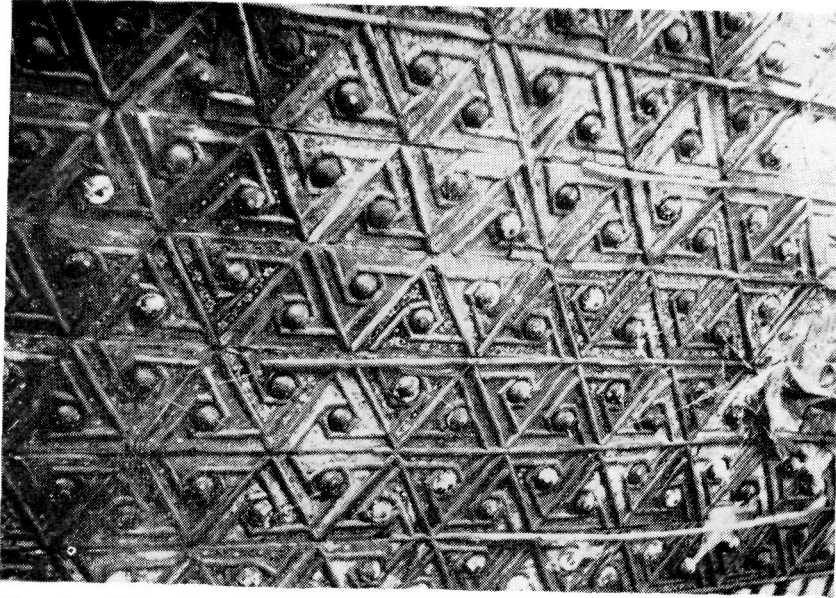
Res. 3— Beyşehir, Eşrefoğlu Süleyman Bey Camii, ahşap tavan süslemesi.



Res. 4— Konya, Mücellid Mescidi, ahşap sütun başlığı.



Res. 5— Ankara, Hacı Bayram Camii, ahşap mahfil tavanı süslemesi.



Res. 6— Urfa, Rıdvaniye Camii, ahşap mahfil tavanı süslemesi.