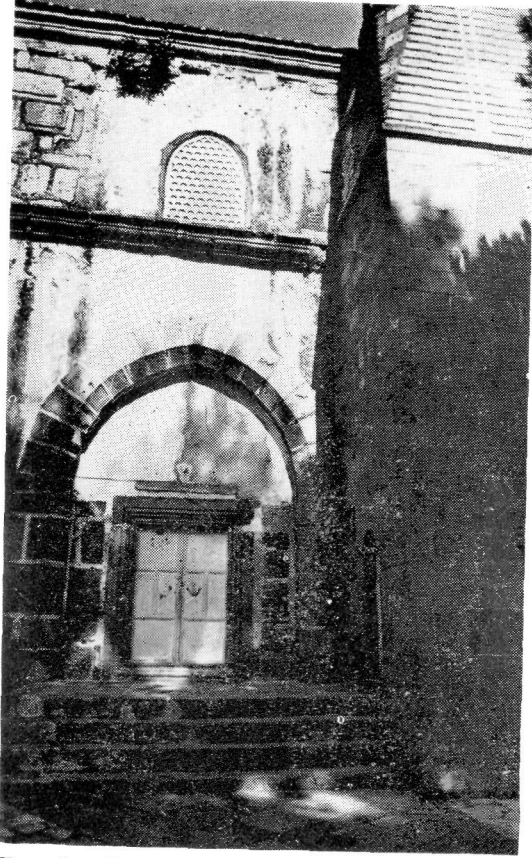


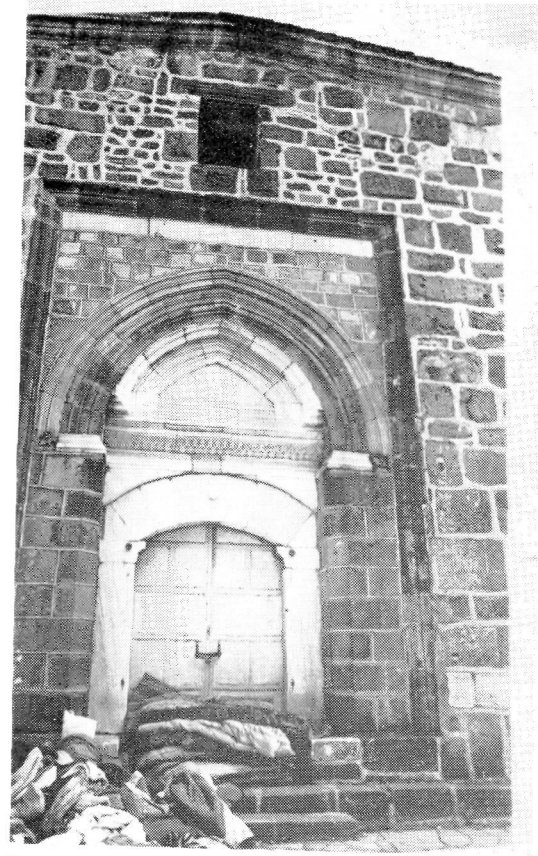
Res. 3— Bergama Ulu Camii, dođu cephesi kuzey ucundaki kurşunluk çıkışı.



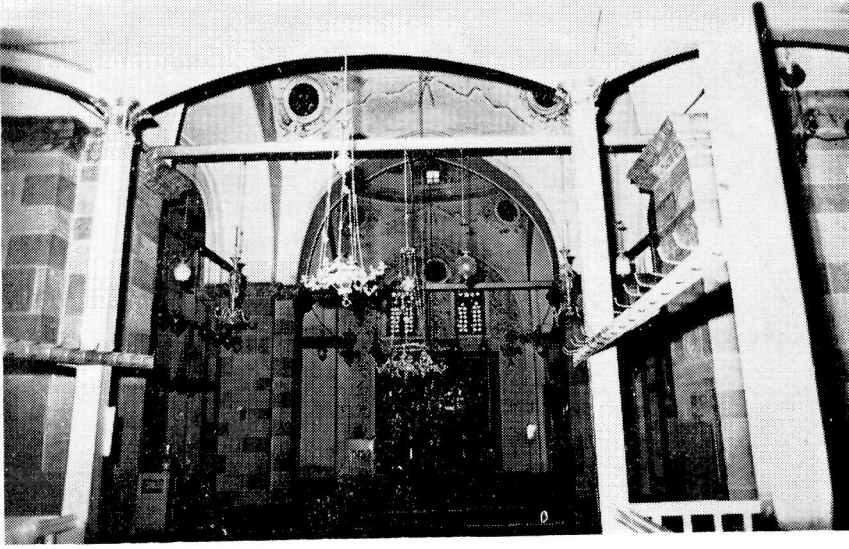
Res. 4— Bergama Ulu Camii, gúney cephe.



Res. 5— Bergama Ulu Camii, batı giriři.



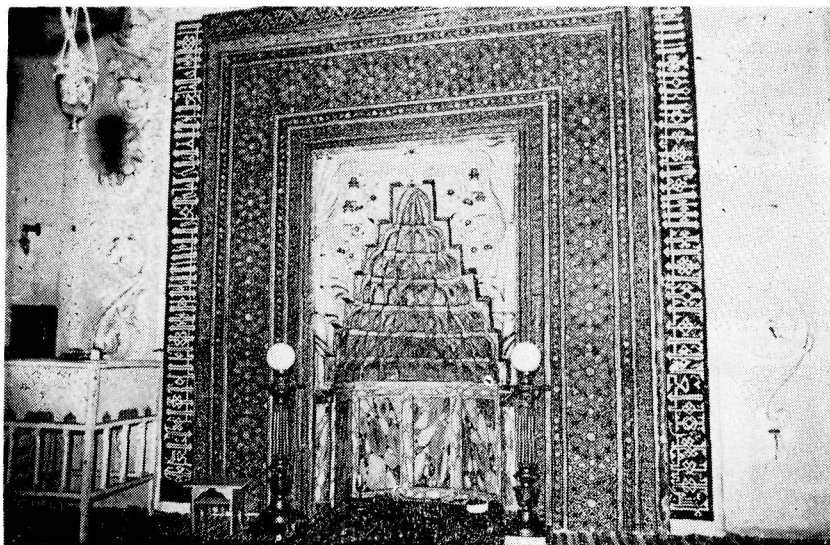
Res. 6— Bergama Ulu Camii, taçkapı.



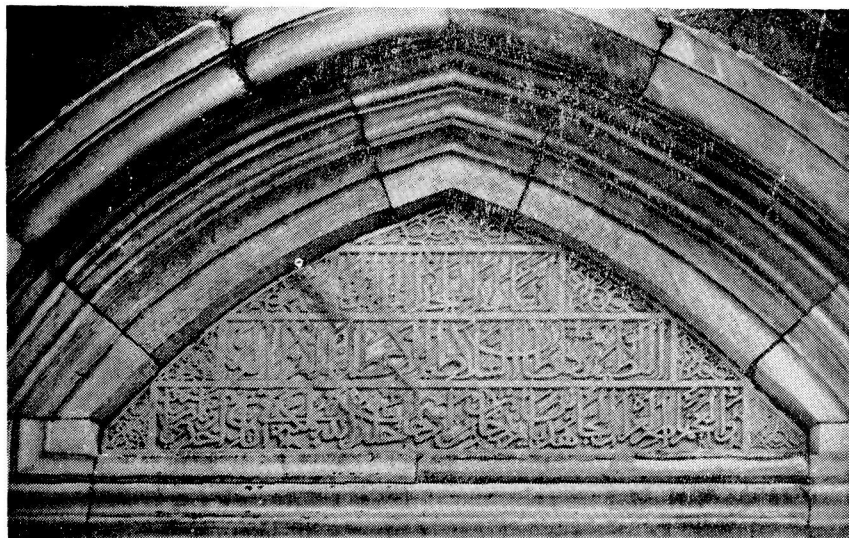
Res. 7— Bergama Ulu Camii, iç görünüş.



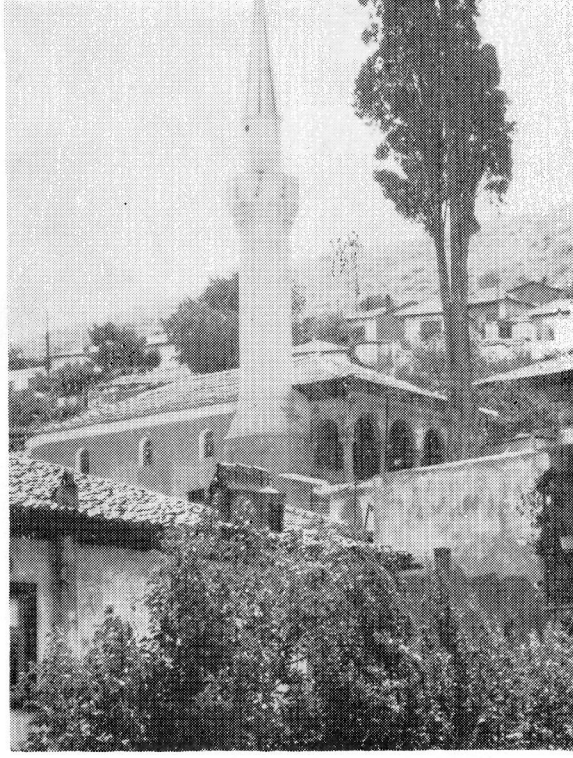
Res. 8— Bergama Ulu Camii, batı tonozları.



Res. 9— Bergama Ulu Camii, mihrap.



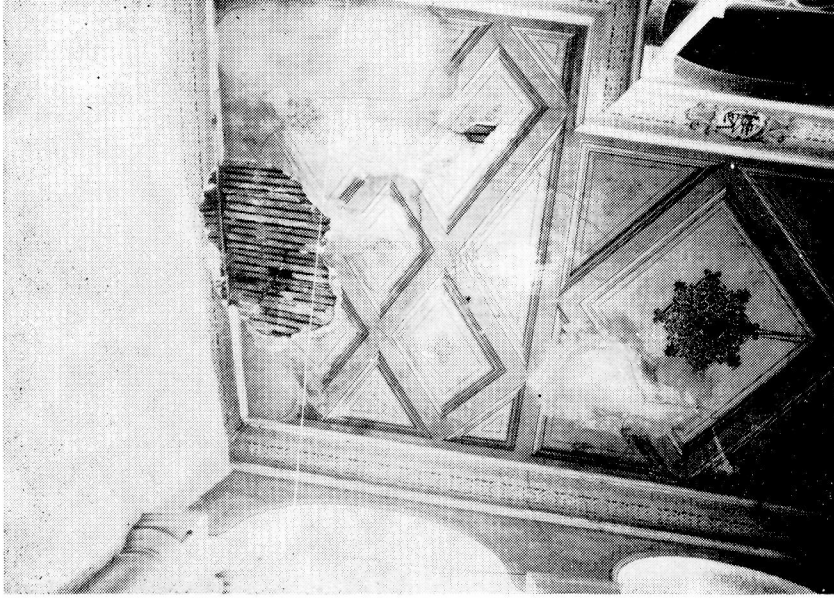
Res. 10— Bergama Ulu Camii, kitabe.



Res. 1— Soma Damgacı Camii genel görünüşü.



Res. 2— Son cemaat yerinin genel görünüşü.



Res. 3— Son cemaat yeri tavan süslemelerinden ayrıntı.



Res. 4— Harim portali ve kadınlar mahfili girişi.



Res. 5— Son cemaat yeri revak kemerlerindeki resimlerden ayrıntı.



Res. 6— Son cemaat yeri revak kemerlerindeki resimlerden ayrıntı.